

Status of the CVA design committee

Baukunst im Kleinen (BiK)



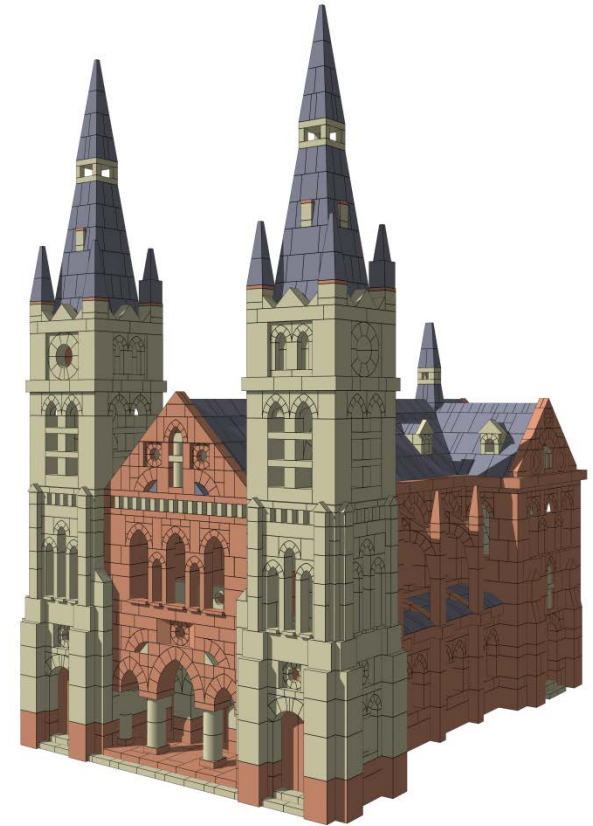
**Martin van Beuzekom, George Bielen,
Fred Hartjes, Guus van Kessel
and Burkhard Schulz**

CVA meeting
Hilversum, October 22, 2011

A

Purpose of “Baukunst im Kleinen” (BiK)

- ◆ Reviewing **new** designs for the stone sets that are produced by the new Anker factory
- ◆ => Presently only NF sets
- ◆ A design published by BiK has the **guarantee** that
 - The building can be made with the stones of the set it is intended for
 - The building is stable
 - The common Ankerfriend can built it without much problems
 - At least 75% of the stones is actually used
 - The building has certain esthetical qualities
 - The design is drawn according to Richter standards
- ~~◆ We do not consider large designs requiring specific stone sets
 - Often only the designer has all the stones to build it~~



Output

- ◆ Final output are booklets like Richter made them containing 10 – 15 designs
- ◆ Presently only virtual (on website)
 - Maybe some paper prints in future



Ontwerpen in behandeling

17-Oct-11

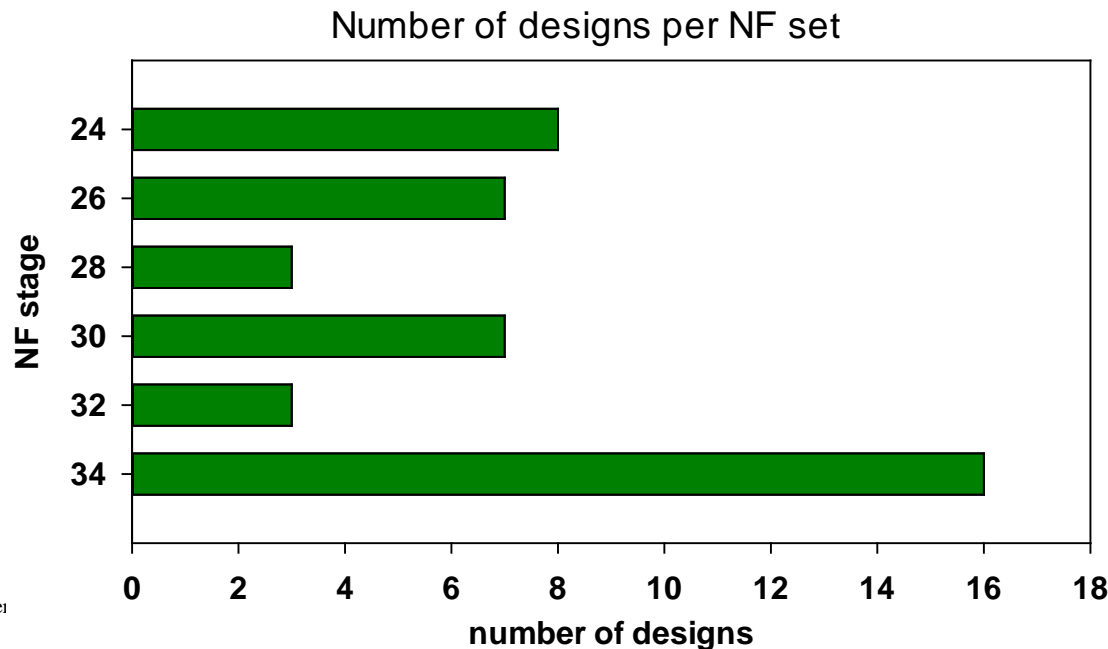
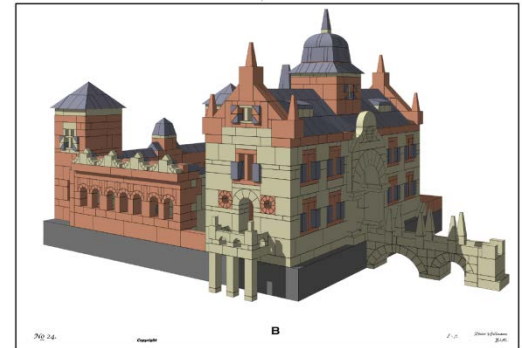
----- gebouwd door: -----

Volg#	Ontvangen	ontwerper	nummer	naam	NF set	Annie	George	Fred	Guus	Martin	Wie heeft het onder zich?	eindbeoordeling	status	Naar Burkhard	In AnkerPlan	Eind-tekeningen	Bouw-controle	Correctie eindtek.	In elektr. catalogus
5		Bruckmann		Grunderzeit - Villa	18	XXX					Fred	9/12/2008 (mail)	niet in CVA cat.	XXX					
1		Wellmann	105	Kastell	24	XXX	XXX				Fred	6/5/2009	afgerond	XXX	XXX	XXX	XXX	XXX	
9		Wellmann	112	Villa 1912	26	XXX	XXX				Fred	4/4/2009	afgerond	XXX					
4		Gundel	42	Frauenkirche Dresden	26	XXX	XXX				Fred	25/12/2008	afgerond	XXX					
3		Bielen		Landhuis	26	XXX		XXX			Fred	24/1/2009	afgerond	XXX					
7		Gundel	46	Mazzocco Enterprises	28	XXX	XXX	XXX			Fred	25/12/2008	afgewezen						
6		Wellmann	97	Ungarisches Thermalbad	28	XXX		XXX			Fred	6/5/2009	afgerond	XXX					
2		Wellmann	99	Prefecture	28	XXX	XXX				Fred	25/12/2008	afgerond	XXX					
8		Bielen		Villa in classicistische stijl	30	XXX		XXX			Guus	4/6/2009	afgerond	XXX	XXX				
10	23/12/2008	Wellmann	110	Rom. Doppelkapelle	30	XXX		XXX			Fred	6/5/2009	afgerond	XXX					
11	22/1/2009	Bruckmann		Huize Ruurlo	28	XXX	XXX				George	1/11/2009	afgerond	XXX					
12	9/4/2009	van Kessel		Station Nijmegen	24	XXX				XXX	Fred; Martin	17/1/2010	afgerond	XXX					
13	29/3/2009	van Kessel		Station Marienbaum	24	XXX				XXX	Martin	16/11/2009	afgerond	XXX	XXX?				
14	6/4/2009	Wellmann	121	Proviant Magazin	32		XXX		XXX		Fred	12/3/2009	afgerond	XXX	~XXX				
15	28/4/2009	Wellmann	122	Gotische Zentralkirche	32	XXX			XXX		Fred	27/1/2009	afgerond	XXX					
16	17/10/2009	Wellmann	124	Haupt Postamt	30	XXX		XXX			Fred	17/10/2009	afgerond	XXX					
17	10/11/2009	Bruckmann		Kongresshaus	32	XXX			XXX		Fred	10/11/2009	afgerond						
18	27/1/2010	Bruckmann		Stadttor	34						Fred	27/1/2010	nog niet in review						
19	27/1/2010	Bruckmann		Gralsburg	34	XXX					Fred	27/1/2010	in review						
20	27/1/2010	Bruckmann		Festhalle	34		XXX		XXX		Fred	27/1/2010	to designer						
21	27/1/2010	Bruckmann		Wandelhalle	34						Fred	27/1/2010	afgeoordeeld (Burkhard)						
22	27/1/2010	Bruckmann		Aussichtsturm	34						Fred	27/1/2010	in review						
23	27/1/2010	Bruckmann		Sportplatz mit Klubhaus	34						Fred	27/1/2010	nog niet in review						
24	24/4/2010	H.de Jonge		St. Nectaire	34	XXX	XXX				Fred	24/4/2010	to designer						
25	22/12/2009	Gundel		Frutzkirche	30						George	22/12/2009	opgeschort (niet genoeg sneden)						
26	15/5/2010	Bielen		Hotel Anker	34					XXX	Fred	15/5/2010	to designer						
27	6/5/2010	Wyttbach	7	Villa2 im Kirchenfeld	34			XXX			Fred	6/5/2010	in review						
28	21/12/2010	Gundel		Kerstboom	34						Fred, Annie	21/12/2010	in review						
29	9/12/2010	Wyttbach	2	Fluterkirche	34						Fred	9/12/2010	nog niet in review						
30	9/12/2010	Wyttbach	3	Munster von Bern	34						Fred	9/12/2010	in review		XXX				
31	9/12/2010	Wyttbach	4	Gedenkhalle	34						Fred	9/12/2010	nog niet in review						
32	30/11/2010	Bielen		Abdijkerk	34				XXX		Guus	30/11/2010	in review		XXX				
33	16/3/2011	Wellmann	91	Erlebnisbrücke	26	XXX	XXX	XXX			Fred	16/3/2011	in review						
34	28/3/2011	Bielen		Gotische Kerk	26						Fred	28/3/2011	nog niet in review		XXX				
35	25/3/2011	Wellmann	80	Sommerresidenz	24			XXX			Fred	25/3/2011	in review	XXX		XXX	XXX	XXX	
36	6/3/2011	Fritsche		Kirche	30						Fred	6/3/2011	nog niet in review		XXX				
37	6/3/2011	Fritsche		Lerbach	30						Fred	6/3/2011	nog niet in review		AnkerCAD				
38	6/3/2011	Fritsche		Schleuse	30						Fred	6/3/2011	nog niet in review		AnkerCAD				
39	6/3/2011	Fritsche		Wimpfen	30						Fred	6/3/2011	nog niet in review		AnkerCAD				
40	8/3/2011	Gundel		Bergfried	24						Fred	8/3/2011	in review		XXX				
41	15/3/2011	Gundel		Wasserpalais	24						George	15/3/2011	in review		XXX				
42	27/4/2011	Wellmann		Lyck tower	34						Fred	27/4/2011	nog niet in review						
43	27/4/2011	Wellmann		Wallfahrtskirche	34				XXX		Guus	27/4/2011	in review		XXX				
44	29/4/2011	van Kessel		Martinuskerk	34						Fred	29/4/2011	nog niet in review		XXX				
45	5/6/2011	Wellmann	216	Wasserschloss	24	XXX					Fred	5/6/2011	oud review		XXX				
46	5/6/2011	Gundel	October 2011	Residenz	26					Fred Har	Fred	5/6/2011	nog niet in review						
47	5/6/2011	Gundel		Villa-1	24						Fred	5/6/2011	nog niet in review						
48	5/6/2011	Wellmann	94	Rathaus	26		XXX				George	5/6/2011	in review		XXX				

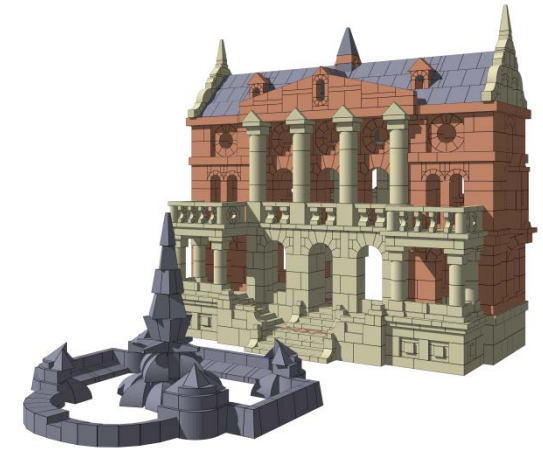
Summary of all received designs

Status of the review and drafting

- ◆ Presently **48 designs** received for NF24 – 34
- ◆ 4 rejected
 - out of scope, hard to build, already published by Burkhard, not sufficient info
- ◆ **44 designs accepted for review**
 - 10 older designs from Burkhard during last 7 months
 - 16 completely reviewed

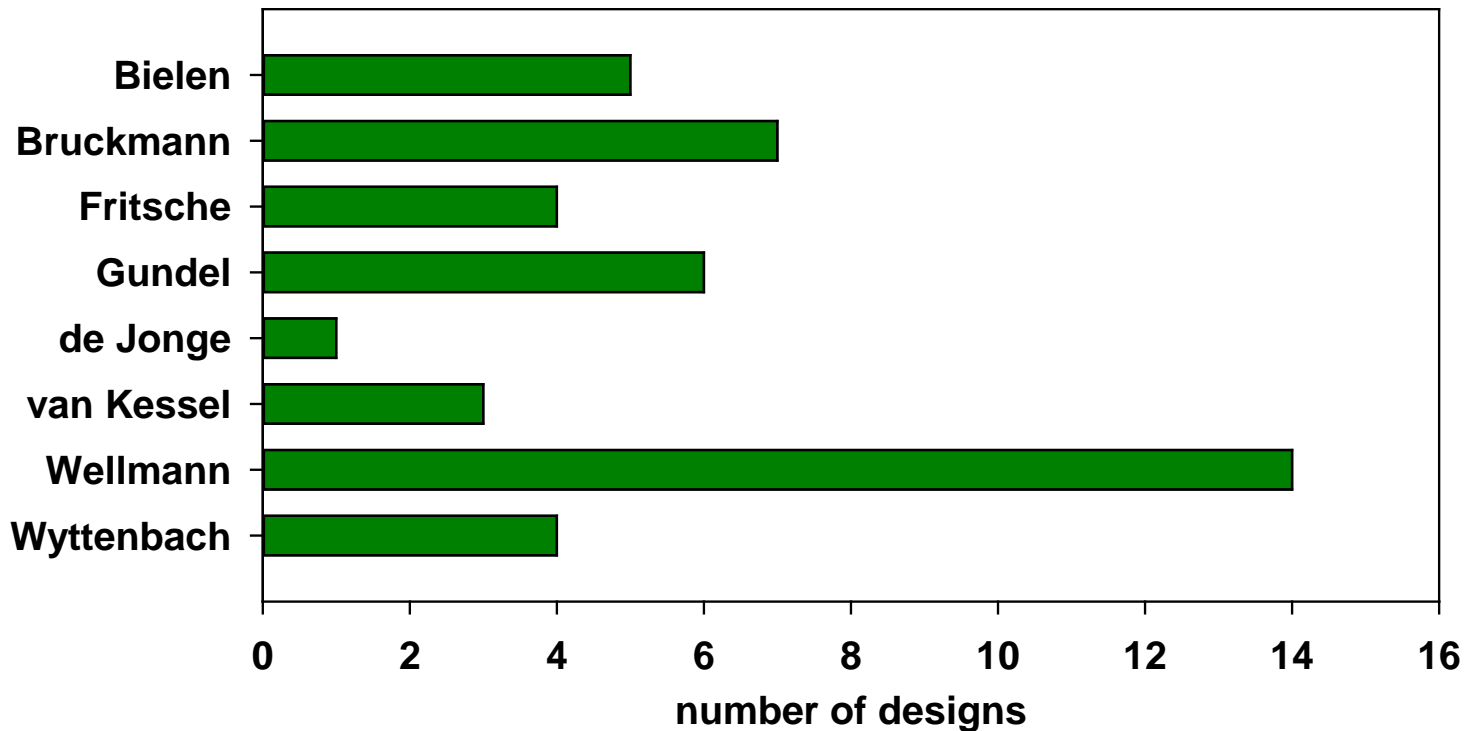


Which designers?



- ◆ Made by eight designers

Number of designs per designer



Reviewing schedule

1. “Build” virtually in Ankerplan

- Minor errors will be corrected (missing stones)
- At major errors the design will be returned to the designer
- Generate temporary drawings *with stone numbers* in the cross sections

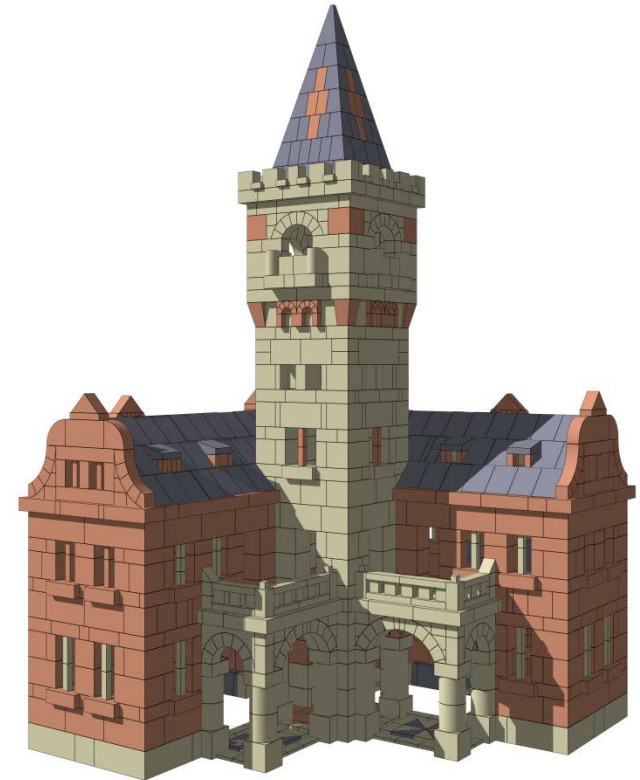
2. **Build physically 1st time** (with stones)

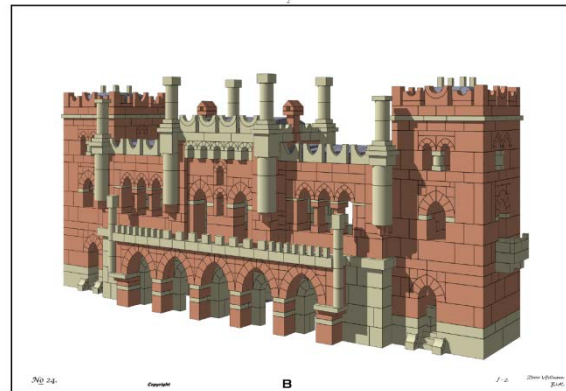
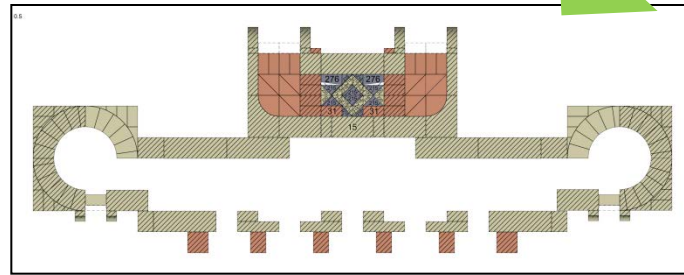
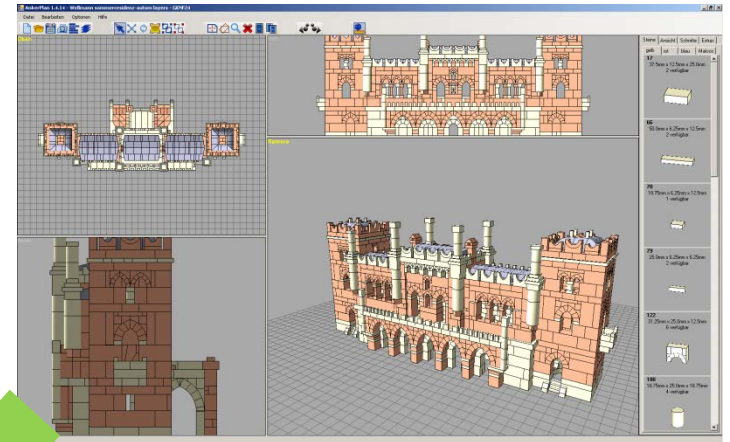
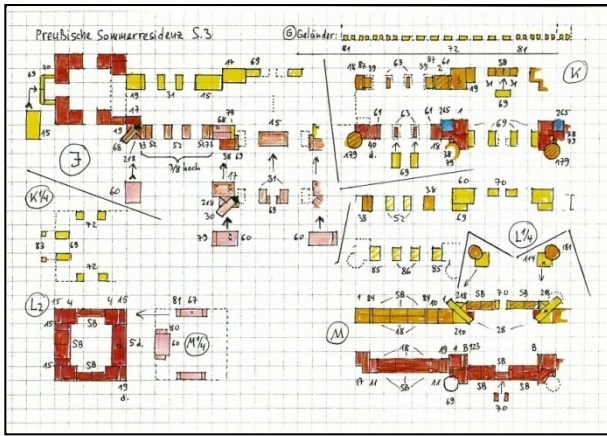
- Minor errors will be corrected in the AnkerPlan drawing
- At major errors the design will be returned to the designer

3. **Produce final drawings; adding** all formatting (*NO stone numbers like at Richter*)

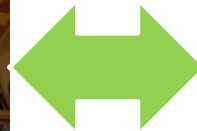
4. **Build physically 2nd time**

5. **Correct final drawings**





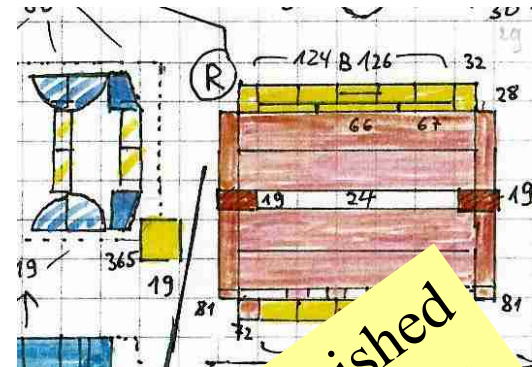
**Reviewing
schedule
in images**



Status production of drawings for NF 24-34

- ◆ **Taking over from Burkhard Schulz** who did this until 2010
- ◆ **Assembly program: AnkerPlan** instead of AnkerCAD
 - ◆ Calculating shadows using POV-Ray
 - ◆ Generating cross sections
- ◆ Other tools
 - ◆ **Micrographx Designer 9** (vector program)
 - ◆ **Digital Image 2006 Suite Edition Editor** (Photoshop based)
- ◆ Systematically producing all drawings
 - => **starting with NF24 (8 designs)**
 - 3 by Wellmann
 - ◆ Hand drawn, complicated structure, many cross sections
 - 5 by Gundel and van Kessel
 - ◆ Already drawn in AnkerCAD => easier to implement in AnkerPlan
- ◆ It will cost us several years to produce all 44 designs in decent drawing

AnkerPlan and POV-Ray are freely available for CVA members



*Two designs finished
third one underway*

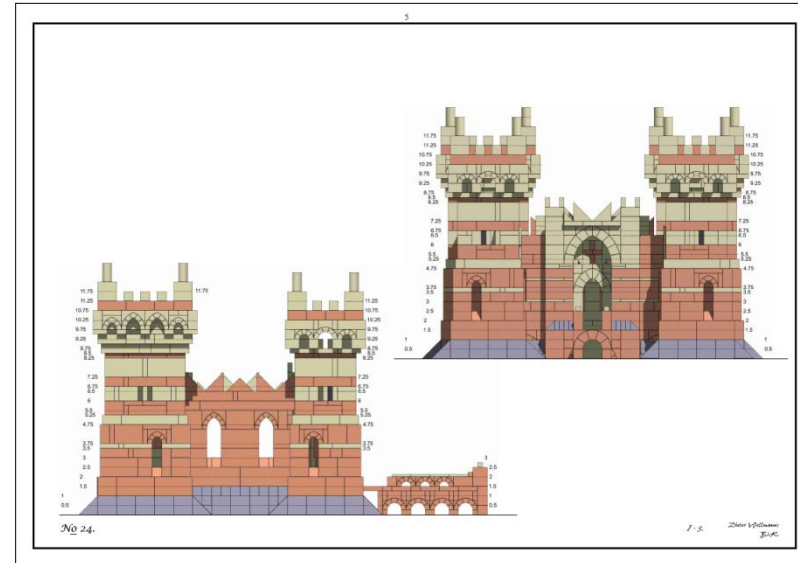
About drafting formats

- ◆ Style based on Richter but:
 - Adding gable views (generated by AnkerPlan)
 - Arches also indicated when visible in 3D views
 - Layers indicated by height in stones, not by letter

- ◆ Paper: **A3** from NF24 on
 - Better visibility, larger cross sections

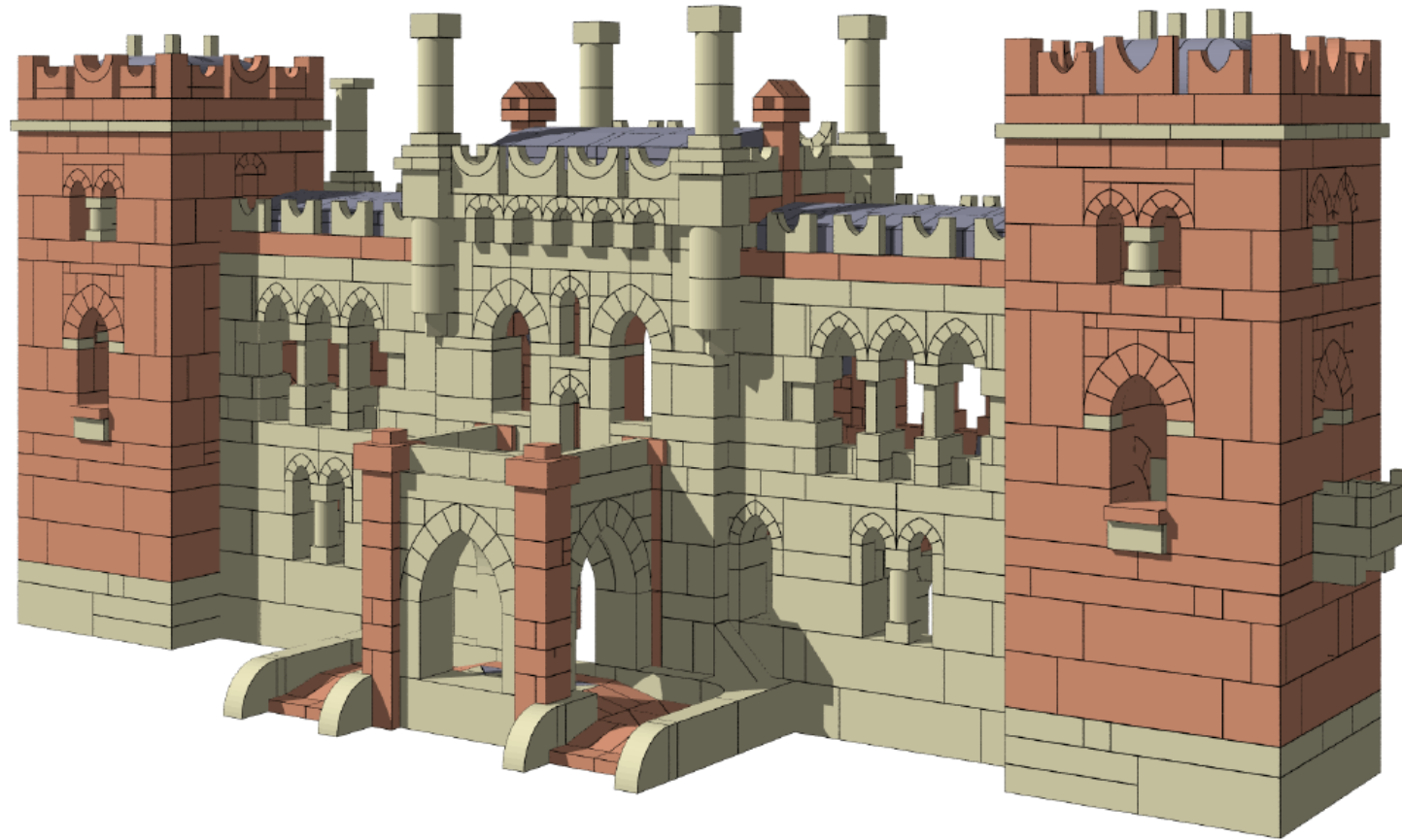
- ◆ Two booklets
 - **Bauvorlagen**: Geometric views + gable views
 - **Schnitte**: Cross sections

- ◆ Availability
 - Presently only virtual on my home page (<http://www.nikhef.nl/~i56/Anker.html>)
 - pdf files
 - In future on public Anker site (which one?)
 - Maybe in paper as well??



Example of finished design “Sommerresidenz” (NF24)

1



No 24.

Copyright

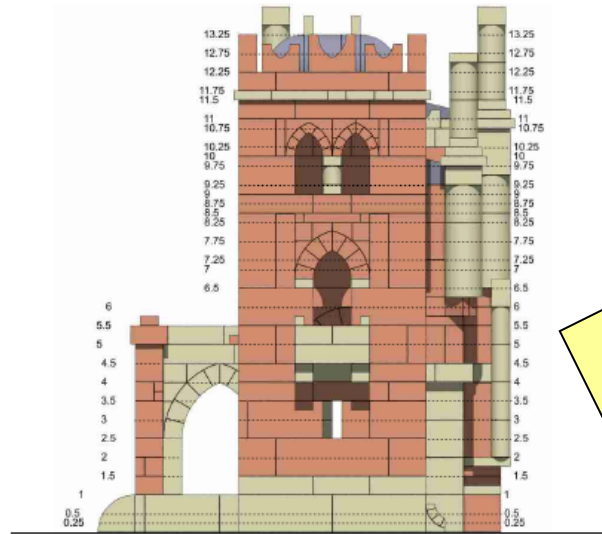
A

I - 1.

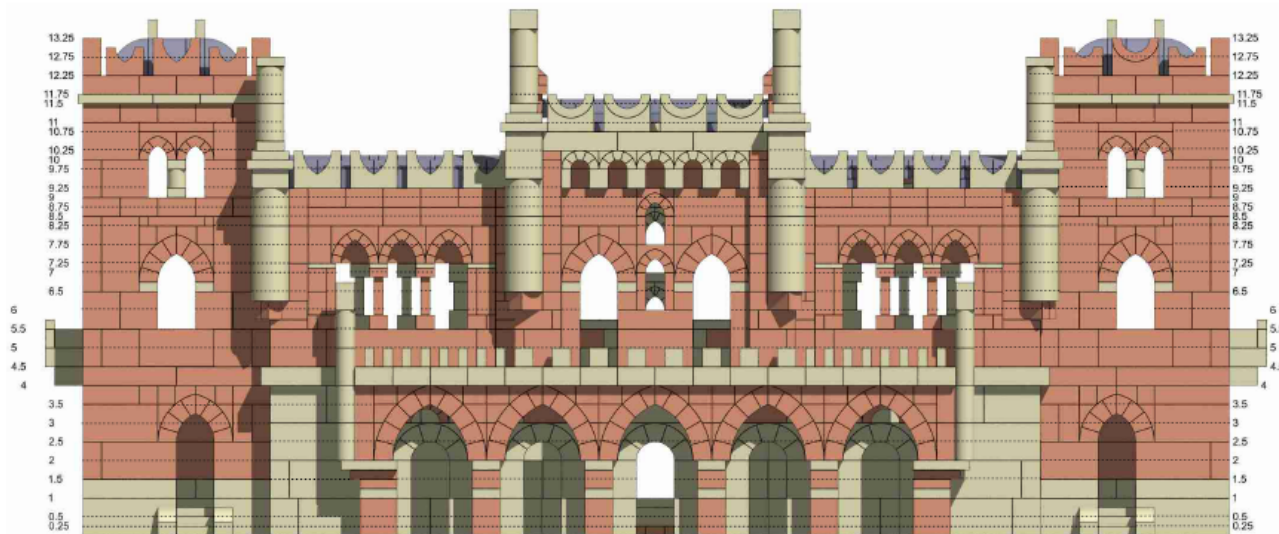
Dieter Wellmann
B.K.

Gable views

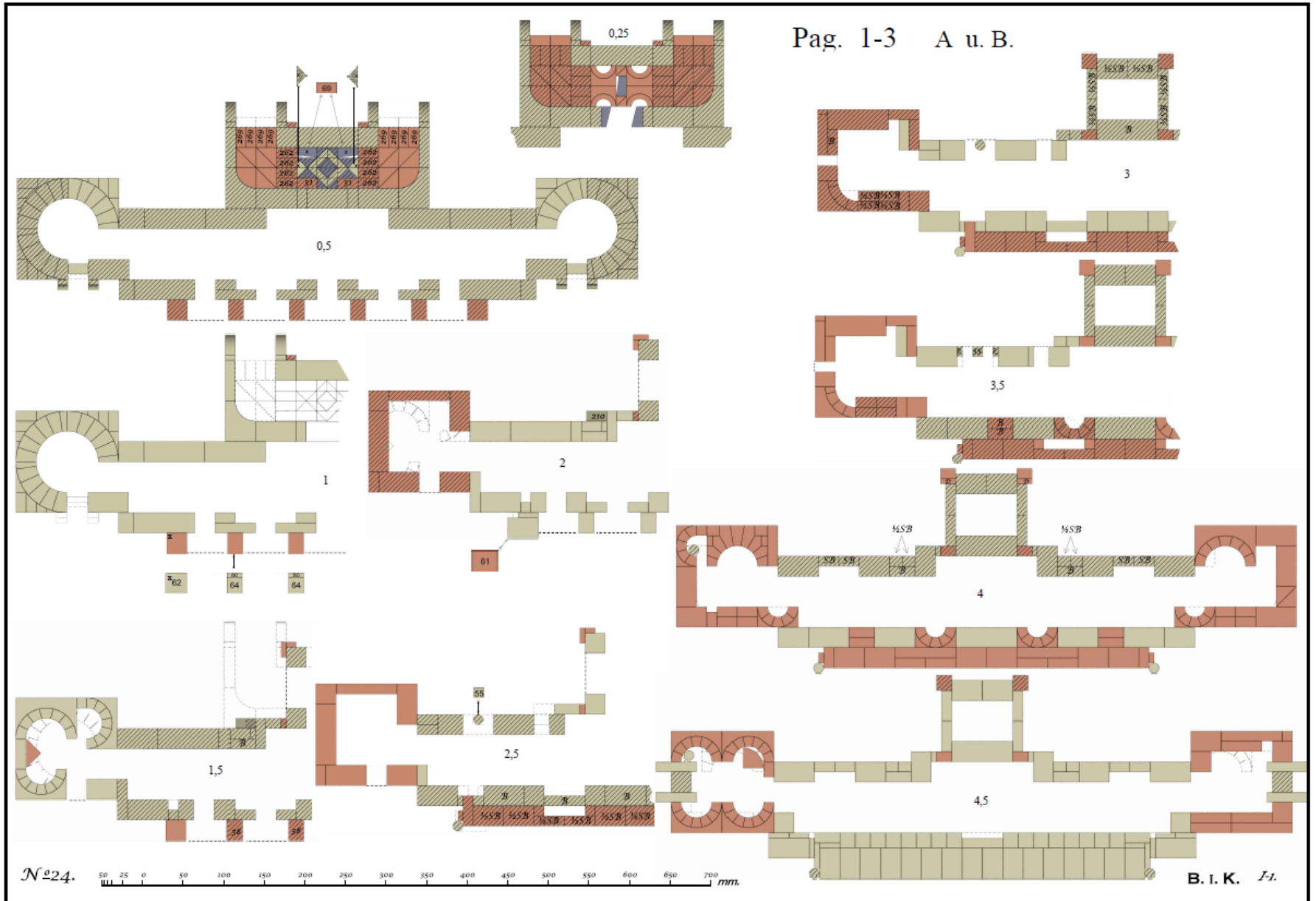
3



Layers are NOT indicated by letters (Richter) but by height numbers (Ankerplan)



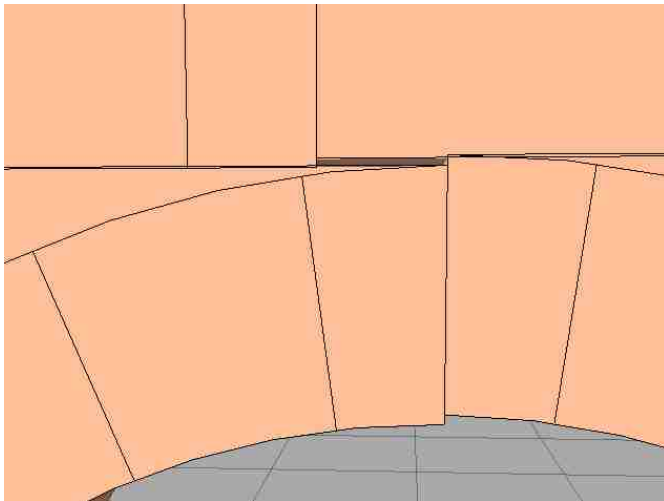
Cross sections



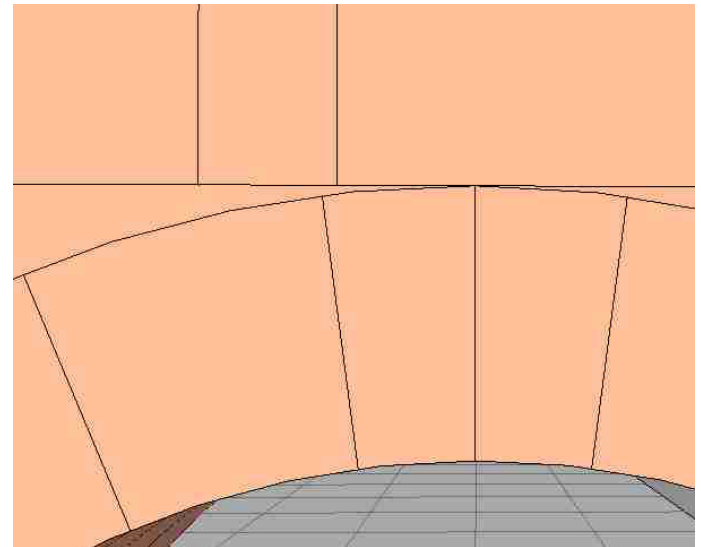
Trying to deal with AnkerPlan shortcomings

- ◆ Incorrect stone definition
 - => stones wrongly positioned
 - => especially with arches and roof stones
- ◆ Original .xaz file corrected by BiK member Martin van Beuzekom
 - Alignment to 1/8 stone grid
 - Improved definition of arches 136 - 141

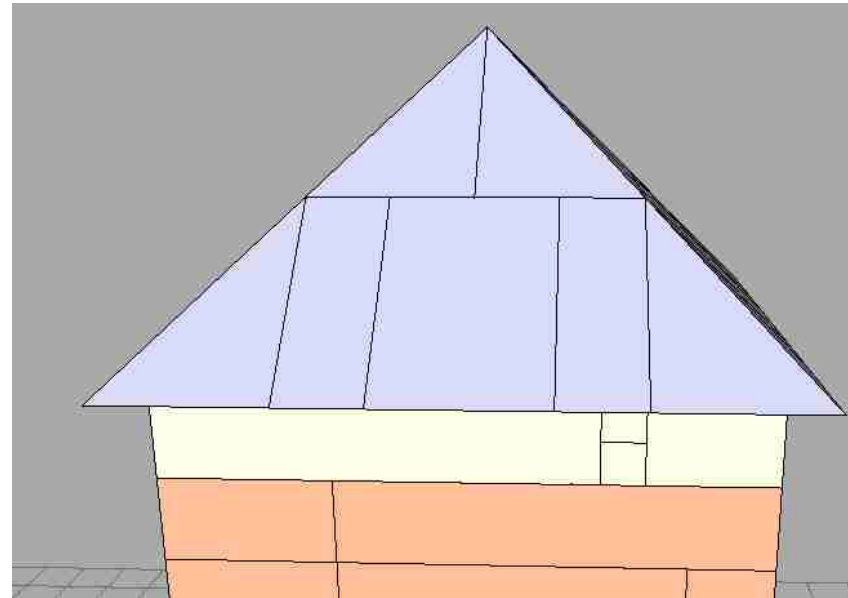
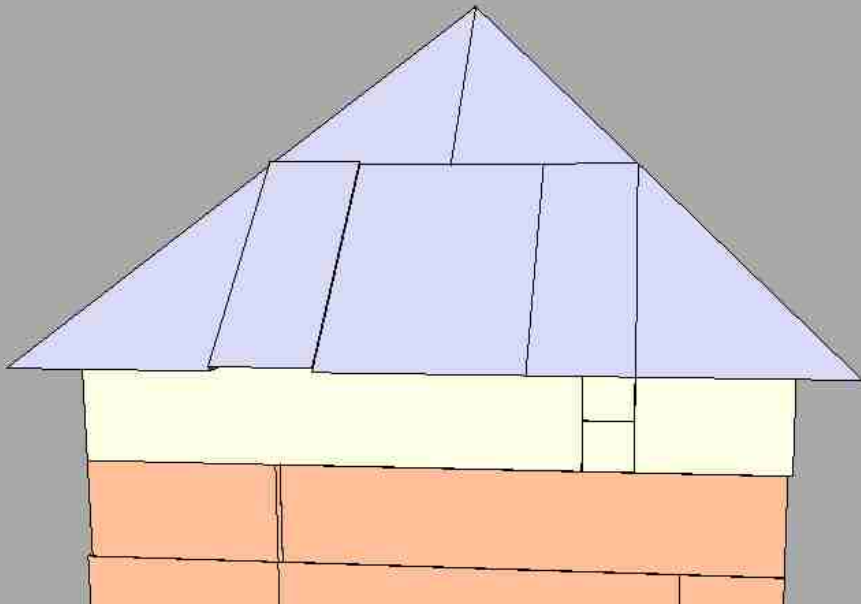
Original AnkerPlan file



Corrected by Martin



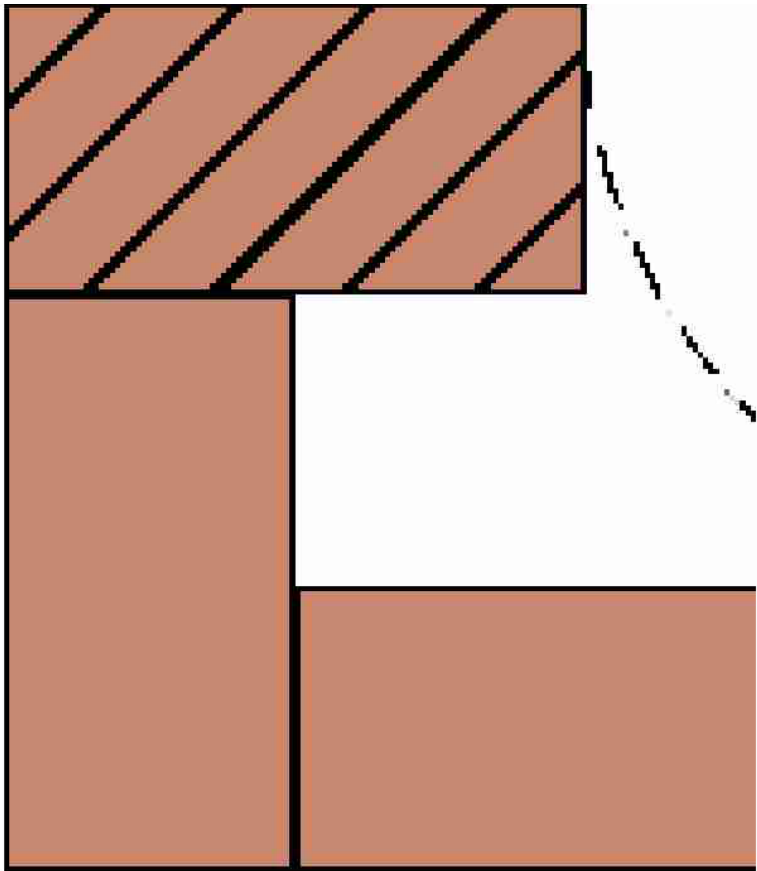
Improved placement of roof stones



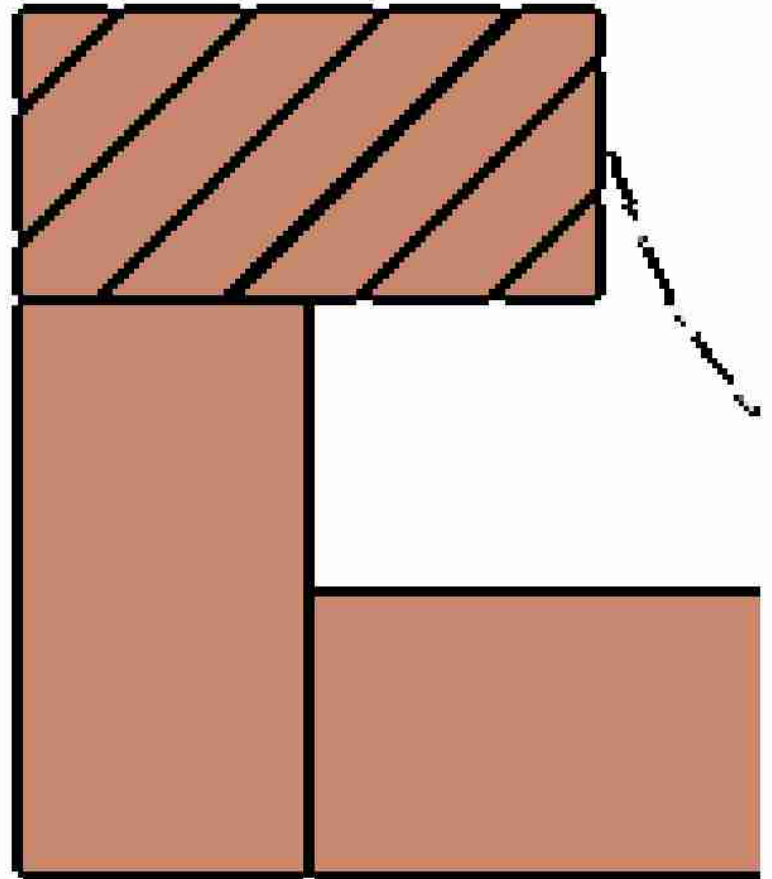
Correcting AnkerPlan shortcomings

- ◆ Wrong line thickness
 - Internal lines twice as thick as external boundaries

Original PovRay file

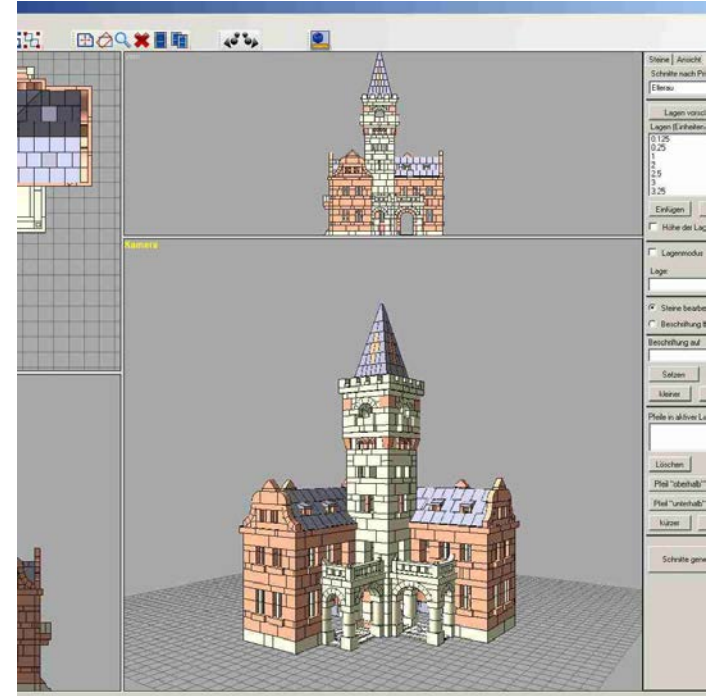


Corrected by Martin



AnkerPlan being renewed

- ◆ Will be completely rewritten
 - Big enterprise, already going on for 4 months
- ◆ Several people from Flying Cat* involved
 - Christian Korn
 - Markus Schuster
 - Rafael Bild (20 h/week)
- ◆ Addressing all know problems from the present AP version
- ◆ Estimated time scale: 6 months (May 2012?)



Quoting a recent mail from Christian Korn:

I am very happy to say that the factory, in particular Mr Knischewski, know about what we are doing and encourage us. We aim at building an AP version that provides full functionality for CVA needs, but is also suitable for the average Anker customer, and while it will always be free for CVA members, I hope to eventually sell some licenses to the general public.

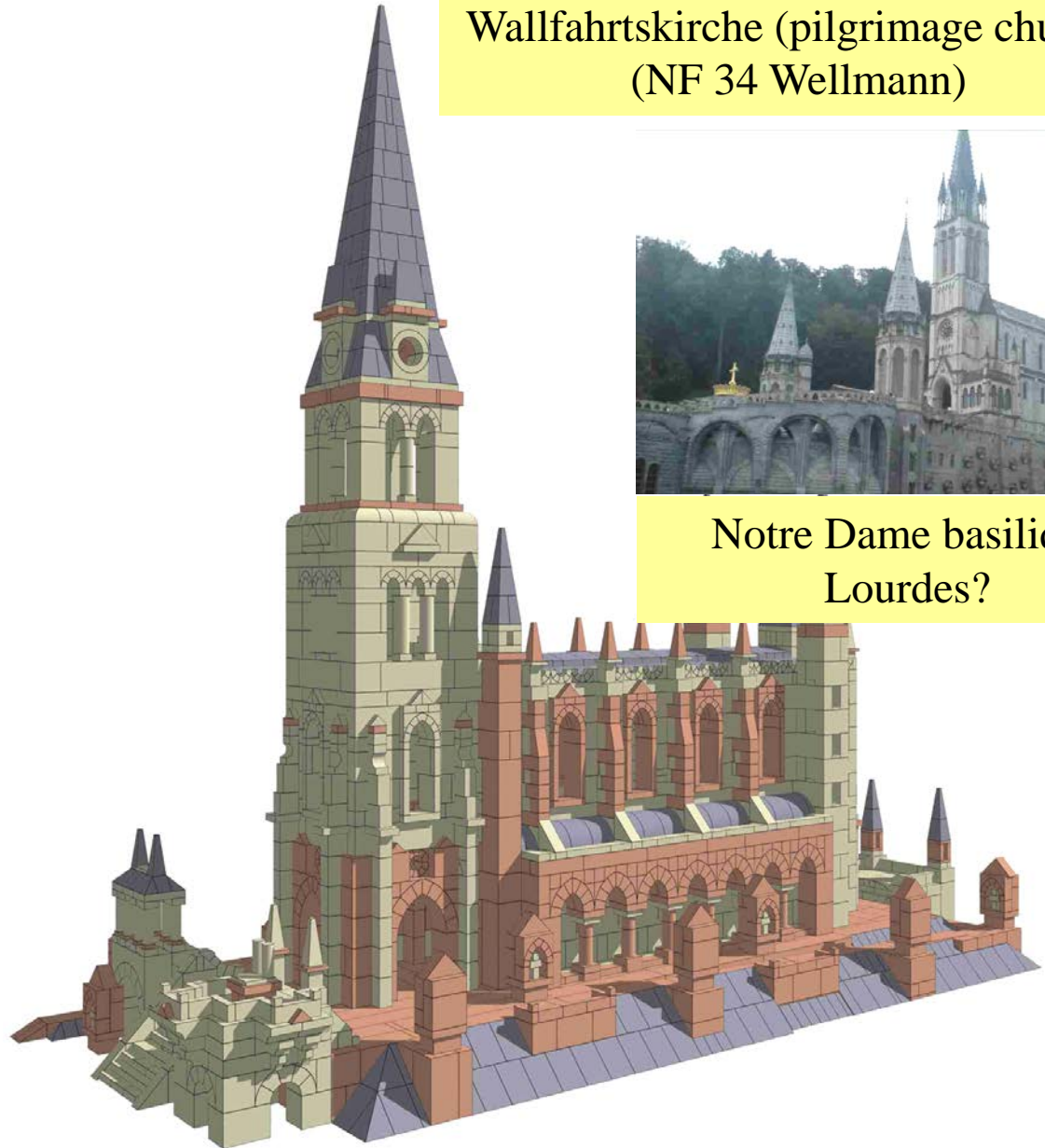
*Flying Cat GmbH has written the present version of AnkerPlan

Three new designs arrived during last 6 months

Lyck tower
(NF 34 Wellmann)



Wallfahrtskirche (pilgrimage church)
(NF 34 Wellmann)



Notre Dame basilique
Lourdes?

Newly arrived (cntd)

Martinuskerk Cuijk



CVA meeting, Hilversum, October 22, 2011



Martinuskerk
(NF 34 van Kessel)

Concluding

- ◆ Again **three new designs** (van Kessel, Wellmann) contributed for NF34 in the last 6 months
- ◆ **Spending lot of time on optimizing drafting format**
 - Still continuing
 - Using Ankerplan and various other tools
 - Richter style
- ◆ **Drafting really started**
 - 44 designs
 - 3rd close to finish
 - 41 over => several years to complete
- ◆ **Rewriting AnkerPlan very promising**
 - Big effort
- ◆ **More info** about BiK on my home page
 - <http://www.nikhef.nl/~i56/Anker.html>

Always open for new designs for NF24 - 34
But it may take quite some time before your design is finally drawn

