

Progress of the CVA design committee

Baukunst im Kleinen (BiK)



Martin van Beuzekom, George Bielen, Fred Hartjes,
Guus van Kessel and Annie Pasteuning

Purpose of “Baukunst im Kleinen” (BiK)

- ◆ Reviewing **new** designs for commonly available Ankersets
- ◆ => Presently only NF sets

- ~~◆ We do not consider large designs requiring specific stone sets
 - Often only the designer has all the stones to build it~~

- ◆ A design approved by BiK **guarantees** that
 - The building can be made with the stones of the set it is intended for
 - The building is stable
 - The common Ankerfriend can built it without much problems
 - At least 75% of the stones is actually used
 - The building has certain esthetical qualities



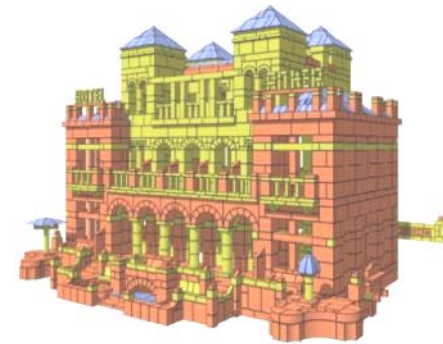
Presently reviewing all larger NF sets

◆ NF24 to 34

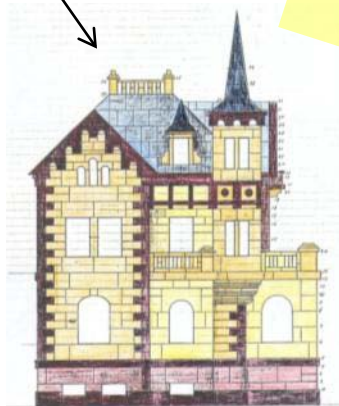
- ◆ Large Anker sets, designs very labour intensive
- ◆ Two new contributions (NF34) since April 2010
 - Church of St Nectaire (Hugo de Jonge)
 - Hotel Anker (George Bielen)



- ◆ But there is large number of existing designs for NF34
 - Gerhard Bruckmann (5x)
 - Eduard Wyttenbach (>12x)
 - Bolhuis
 -

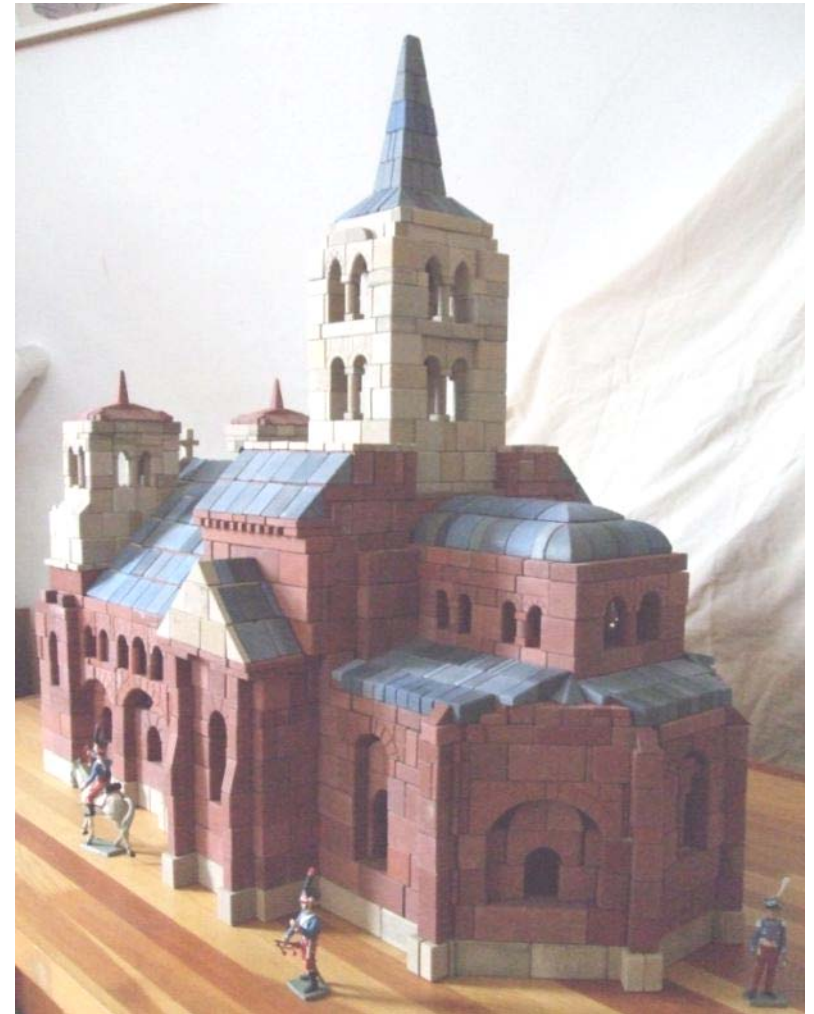
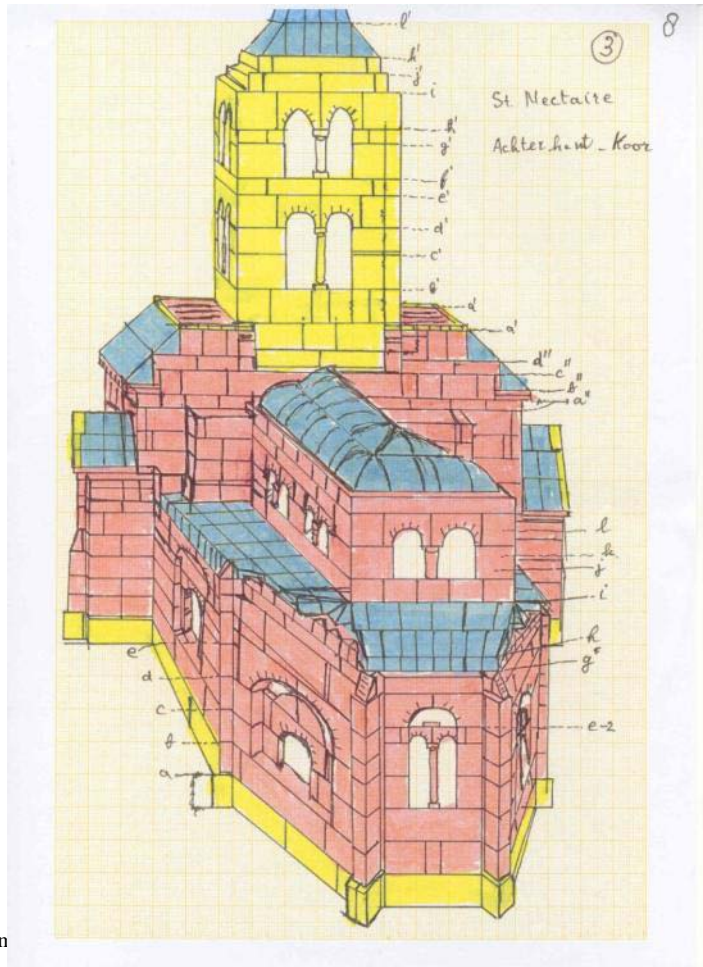


On the reviewing schedule we give priority to recent design over old designs



St Nectaire (NF 34)

- ◆ Designed by AVR Hugo de Jonge
 - Famous Romanesque church in France
 - 45° walls in the choir



Hotel Anker (NF34)

◆ By Avr George Bielen

- Rich in detailing
- Requires stable “Anker hand”

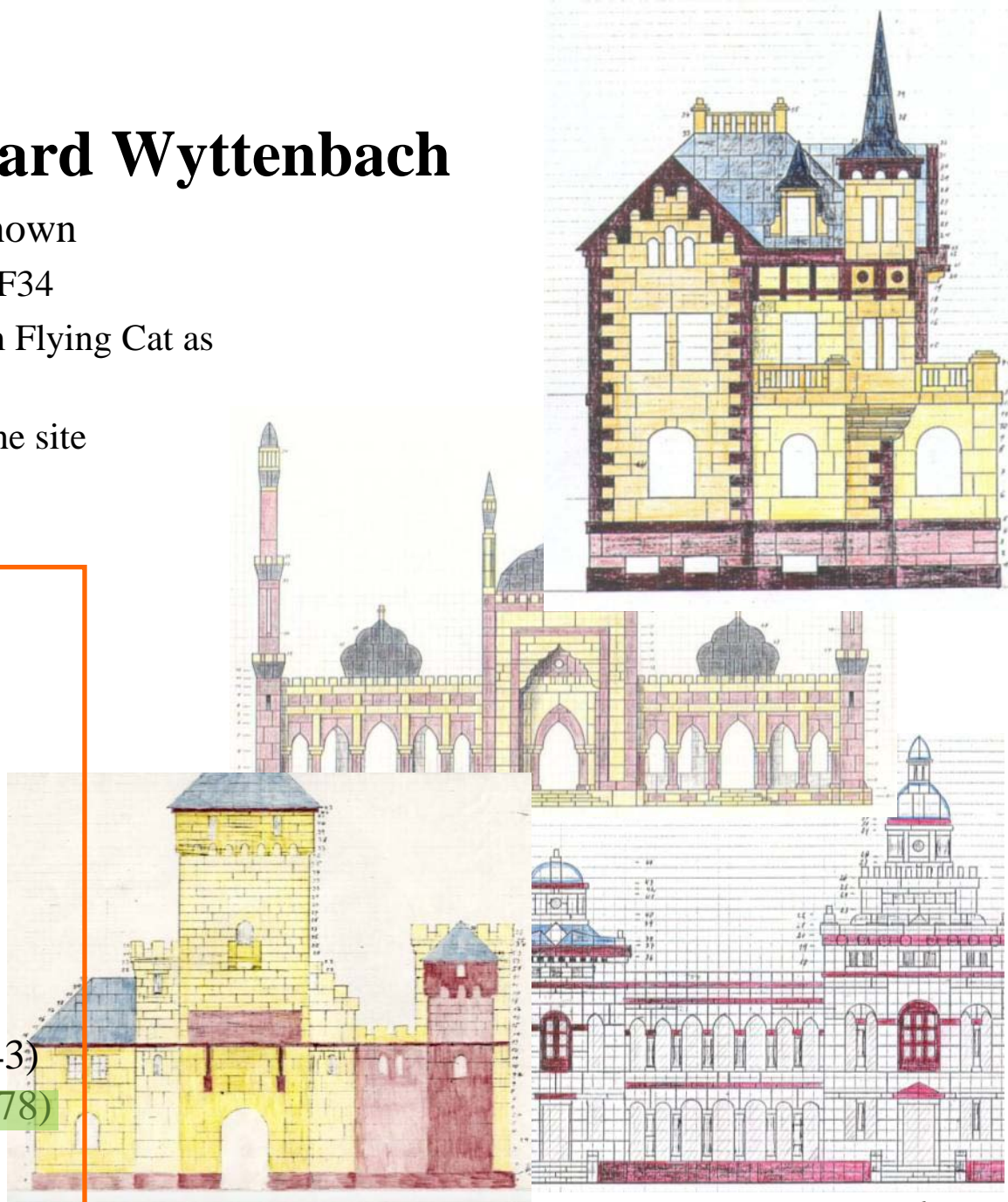


Designs from Eduard Wyttenbach

- ◆ 12 beautiful designs were known
 - Not all suited for “pure” NF34
 - Could be downloaded from Flying Cat as (coloured) BW copy
 - Now been removed from the site

= CVA

- 1 - Kirchen-Orgel (1939)
- 2 - Flüternkirche (1940)
- 4 - Gedenkhalle (1981)
- 5 - Grand Hotel Etoile
- 6 - Villa Seeblick (1942)
- 7 - Villa nr 2 im Kirchenfeld
- 10 - Bahnhof (1943)
- 11 - Moschee
- 12 - Port Said (1944)
- 13 – Indisches Tempelgrab (1943)
- 16 – Bundes Archif in Genf (1978)
- 25 - Schloss



Wytttenbach designs

◆ In total **67** designs have been made

- Part is made for larger sets than NF34

◆ Avr **Andrea Mazocco** has bought 22 designs

- Mostly of the lower numbers
- All scanned near end 2010

◆ Three are at the CVA

- Opus 10, 11 and 16

◆ => so 42 are presently unknown

◆ But also Avr **Ernst Born** has many designs

- To be examined

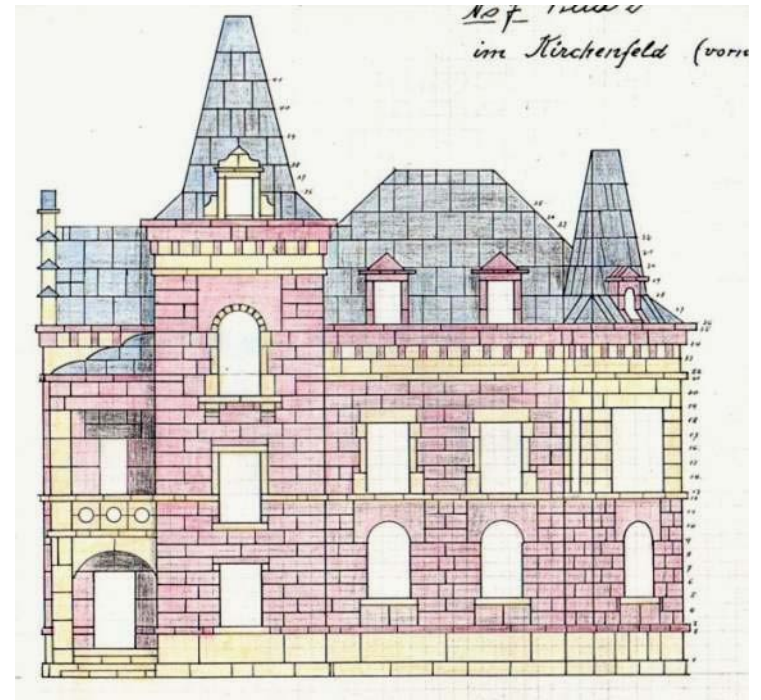
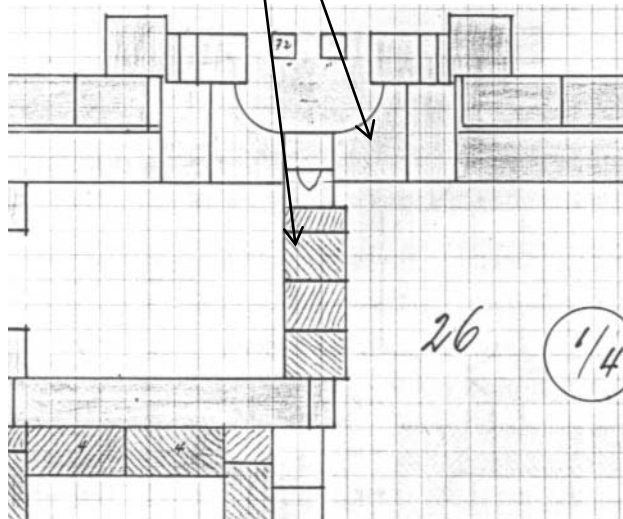
Opus Titel	Benötigte Kasten	Kalender Vorschlag für Jahr	Erfasst Ankerplan	Sammlung Weber bei acm Foto Ansicht Schnitt Fenster Türen	CVA Archiv Quelle BS	acm	cva	tot	fehlt	
1 Kirchenorgel	GK NF 34				Kopie	ja	1	1	2	
2 Fluntenkirche in Zürich	GK NF 34	2010			Karton	Karton	ja	1	1	2
3 Münster von Bern	GK NF 34	2010			Karton	Karton	ja	1	1	1
4 Gedenkhalle	GK NF 34	2010				ja	1	1	2	
5 Grand Hotel	GK NF 34				Karton	Karton	ja	1	1	2
6 Villa am See – Seeblick	GK NF 34	2010	CAD – ACM		Karton	ja	1	1	2	
7 Villa im Kirchenfeld	GK NF 34	2010				Karton	ja	1	1	2
8	GK NF 34								0	1
9	GK NF 34								0	1
10	GK NF 34					ja	1	1	1	
11	GK NF 34	2010	CAD – BS			ja	1	1	1	
12 Verwaltungsgebäude der Schimannngesellschaft Porte-Salod	GK NF 34					Karton	ja	1	1	2
13 Indisches Tempelgrab	GK NF 34	2010				Teich	ja	1	1	2
14									0	1
15 Eingang der Fort-Moschee in Derawar 1959							ja	1	1	1
16									0	1
17	*								0	1
18	*								0	1
19	*								0	1
20 Konferenzgebäude in Jalta	*							1	1	1
21	*								0	1
22 Rumänische Gesandtschaft in Bern	*					ja	1	1	2	
23	*								0	1
24	*								0	1
25 Schloss mit altem Wehrturm	*					ja	1	1	2	
26	*								0	1
27	*								0	1
28	*								0	1
29	*								0	1
30	*								0	1
31	*								0	1
32	*								0	1
33	*								0	1
34	*								0	1
35	*								0	1
36	*								0	1
37	*								0	1
38	*								0	1
39	*								0	1
40	*								0	1
41	*								0	1
42	*								0	1
43	*								0	1
44 Rathaus von Hälsingborg	*	2010				Karton	Karton	1	1	1
45	*								0	1
46 Herrschaftsitz	*							1	1	1
47	*								0	1
48 Palais Royal	*							1	1	1
49	*								0	1
50 Rathaus	*							1	1	1
51 Regierungsgebäude von Buenos-Aires	*					Karton	Karton	1	1	1
52	*							1	1	1
53	*								0	1
54	*								0	1
55	*								0	1
56	*								0	1
57	*								0	1
58	*								0	1
59	*								0	1
60	*								0	1
61	*								0	1
62	*								0	1
63	*								0	1
64 Moschee Derawar – Überarbeitung von Opus 15	*						Tor	1	1	1
65 Schloss Dresden	*	2010						1	1	1
66 Pavillion	*							1	1	1
67 Palais Royal – Überarbeitung von Opus 48	*							1	1	1

Overview by Andrea Mazzocco

Reviewing Villa im Kirchenfeld

- ◆ Nice design: two sides have half stone walls
 - Presently hard to build using scans from old BW copies
 - Which stones are yellow, which are red?
 - Scans of Wyttenbach designs at CVA are easier to encrypt

Red or yellow??



Making the CVA booklets after the review

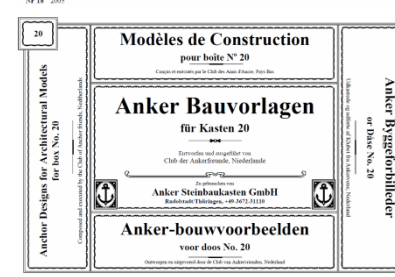
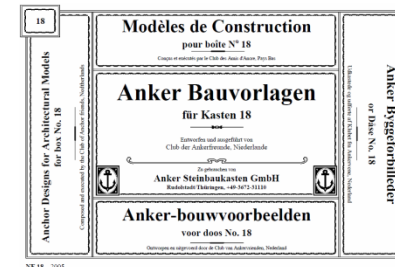
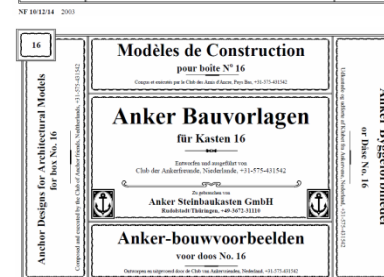
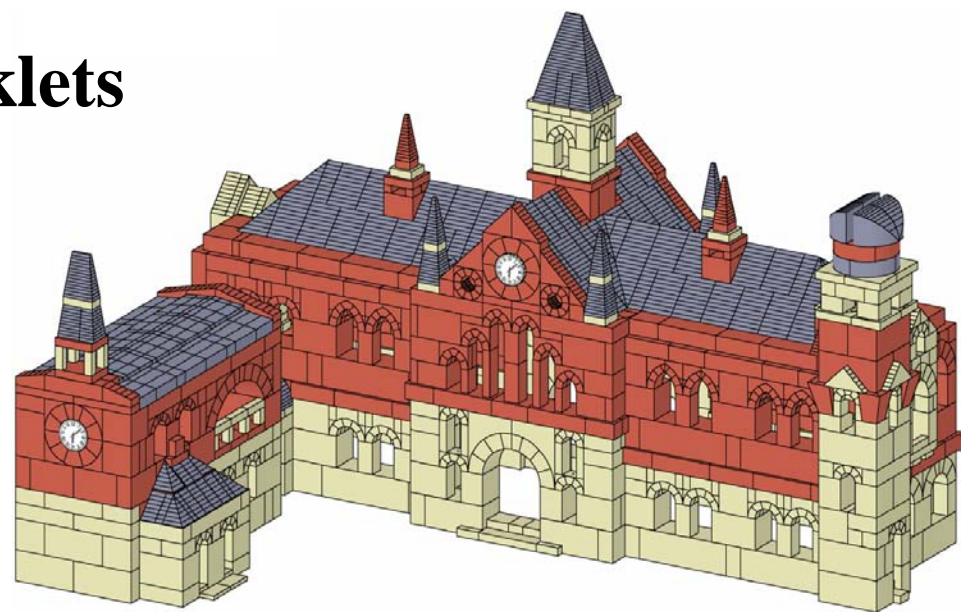
◆ Burkhard Schulz made 5 CVA booklets

- NF 6 + 8
- NF10 + 12 + 14
- NF16
- NF18
- NF20
- NF22 to be finished mid 2011

◆ Presently low priority, so going slowly

◆ => we have to find another solution for the drafting of the CVA booklets

- Maybe by BiK??



Concluding

- ◆ Two new designs contributed for NF34 in the last 6 months
 - Good score taking into account the complexity of these buildings

- ◆ Existing designs
 - Bruckmann
 - Wyttenbach
 - Bolhuis
 -

- ◆ Where to make the CVA NF booklets from NF 24 on?

