

Status of the CVA design committee

Baukunst im Kleinen (BiK)

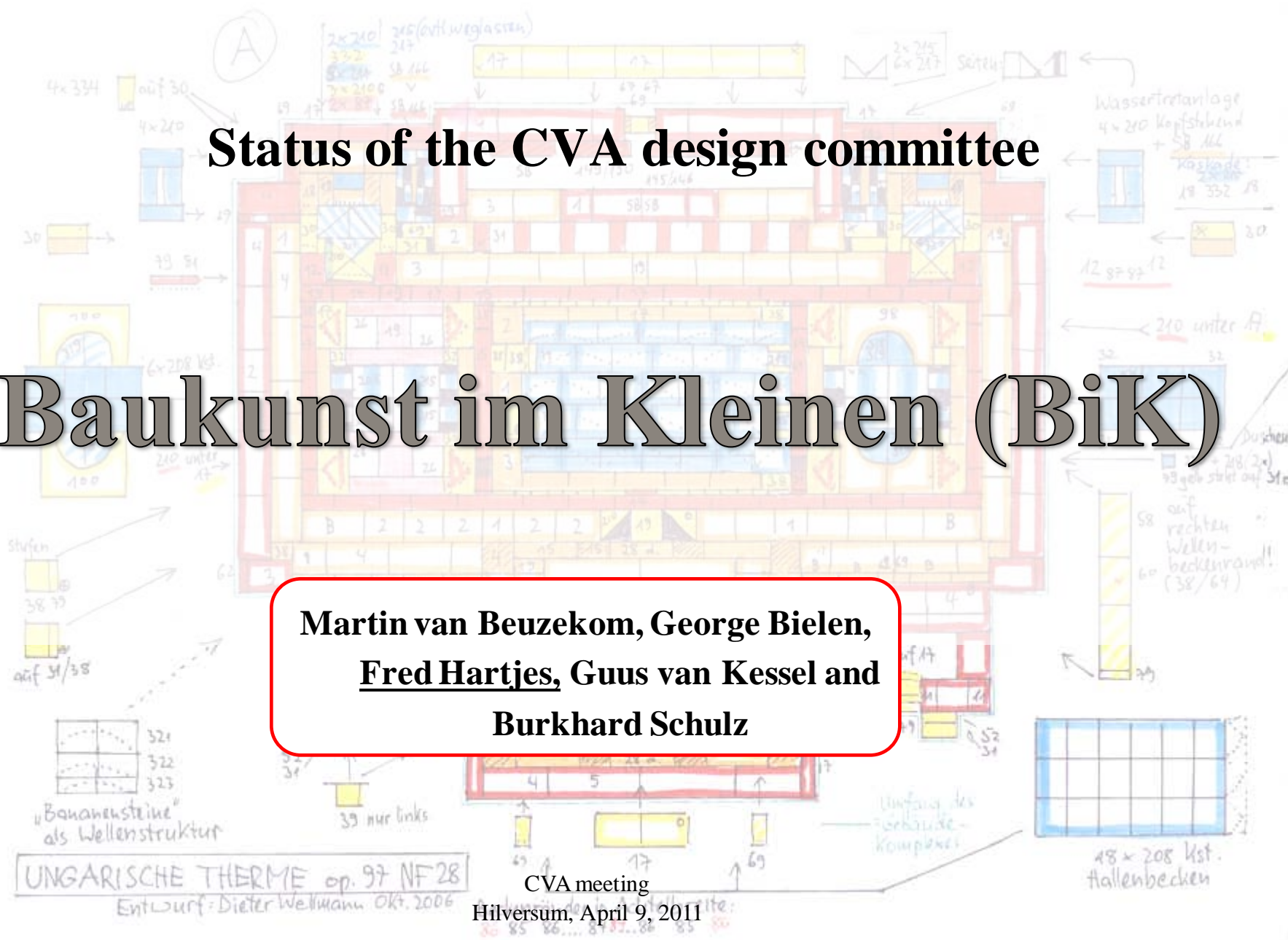
Martin van Beuzekom, George Bielen,
Fred Hartjes, Guus van Kessel and
Burkhard Schulz

UNGARISCHE THERME op. 97 NF 28

Entwurf: Dieter Weltmann OKT. 2006

CVA meeting

Hilversum, April 9, 2011



Purpose of “Baukunst im Kleinen” (BiK)

- ◆ Reviewing **new** designs for commonly available Ankersets
- ◆ => Presently only NF sets

- ◆ A design published by BiK **has the guarantee** that
 - The building can be made with the stones of the set it is intended for
 - The building is stable
 - The common Ankerfreund can built it without much problems
 - At least 75% of the stones is actually used
 - The building has certain esthetical qualities



- ~~◆ We do not consider large designs requiring specific stone sets
 - Often only the designer has all the stones to build it~~

Output

- ◆ Final output are booklets like Richter made them containing 10 – 15 designs
- ◆ Presently only virtual (on website)
 - Maybe some paper prints in future



Dutch members of BiK will now make final drawings for NF 24-34

◆ **Relieving** Burkhard Schulz who did this until now

◆ **Style**

- Like Burkhard used in CVA NF6 – 20
- But adding few Richter decoration

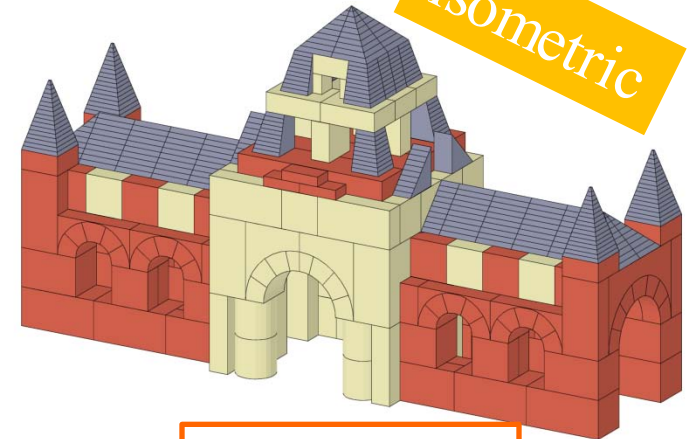
◆ **Drafting program: AnkerPlan** instead of AnkerCAD

- ◆ Calculating shadows using POV-Ray

◆ **Advantages** of AnkerPlan over AnkerCAD

- More advanced software
- Complete freedom for all stone angles and positions
- Geometric instead of isometric

◆ **Presently** 15 designs for NF24 – 32 are ready for drafting



AnkerCAD



AnkerPlan

AnkerCAD, AnkerPlan and POV-Ray are free available for CVA members

Modified reviewing schedule

1. “Build” virtually in Ankerplan

- Minor errors will be corrected (missing stones)
- At major errors the design will be returned to the designer
- Generate temporary drawings *with stone numbers* in the cross sections

2. **Build physically 1st time** (with stones)

- Minor errors will be corrected in the AnkerPlan drawing
- At major errors the design will be returned to the designer

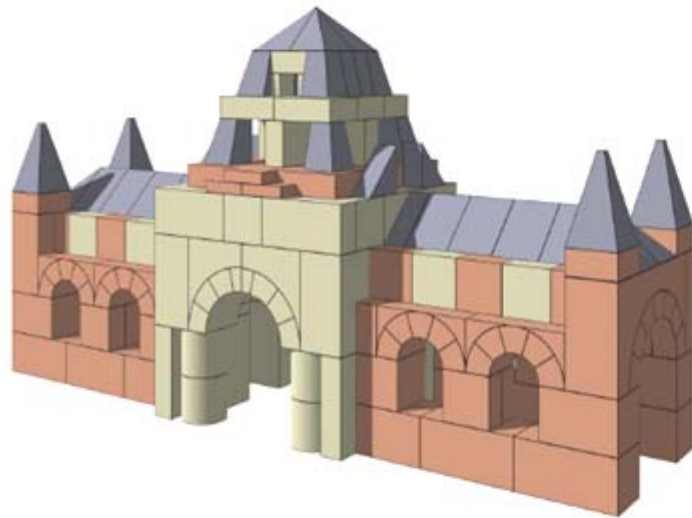
3. **Generate final drawings, adding** all formatting (*NO stone numbers like at Richter*)

4. **Build physically 2nd time**

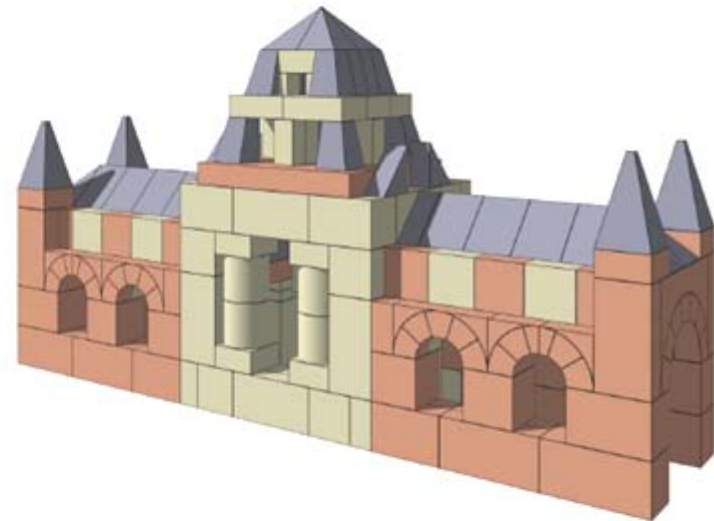
5. **Correct final drawings**

Example of formatted drawing “Trinkhalle” (NF8)

6



A



B

No 8.

Copyright

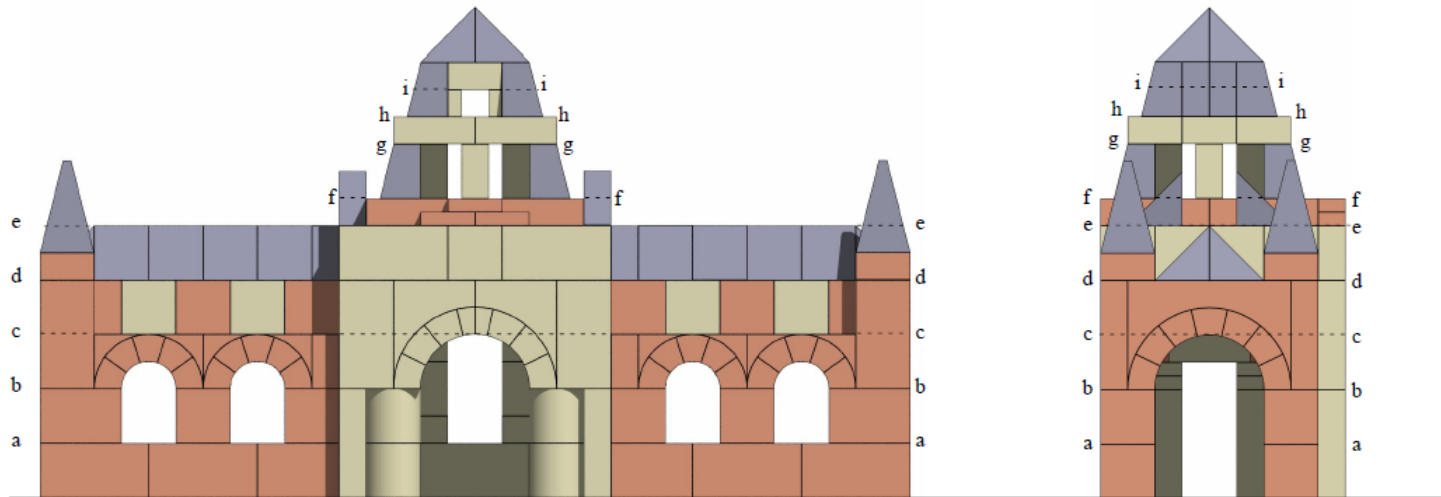
1-6.

*Gerhart Erckmann
B.K.*

Gable views

- ◆ Layers will NOT be indicated by letters (Richter) but by height numbers (Ankerplan)

7



No 8.

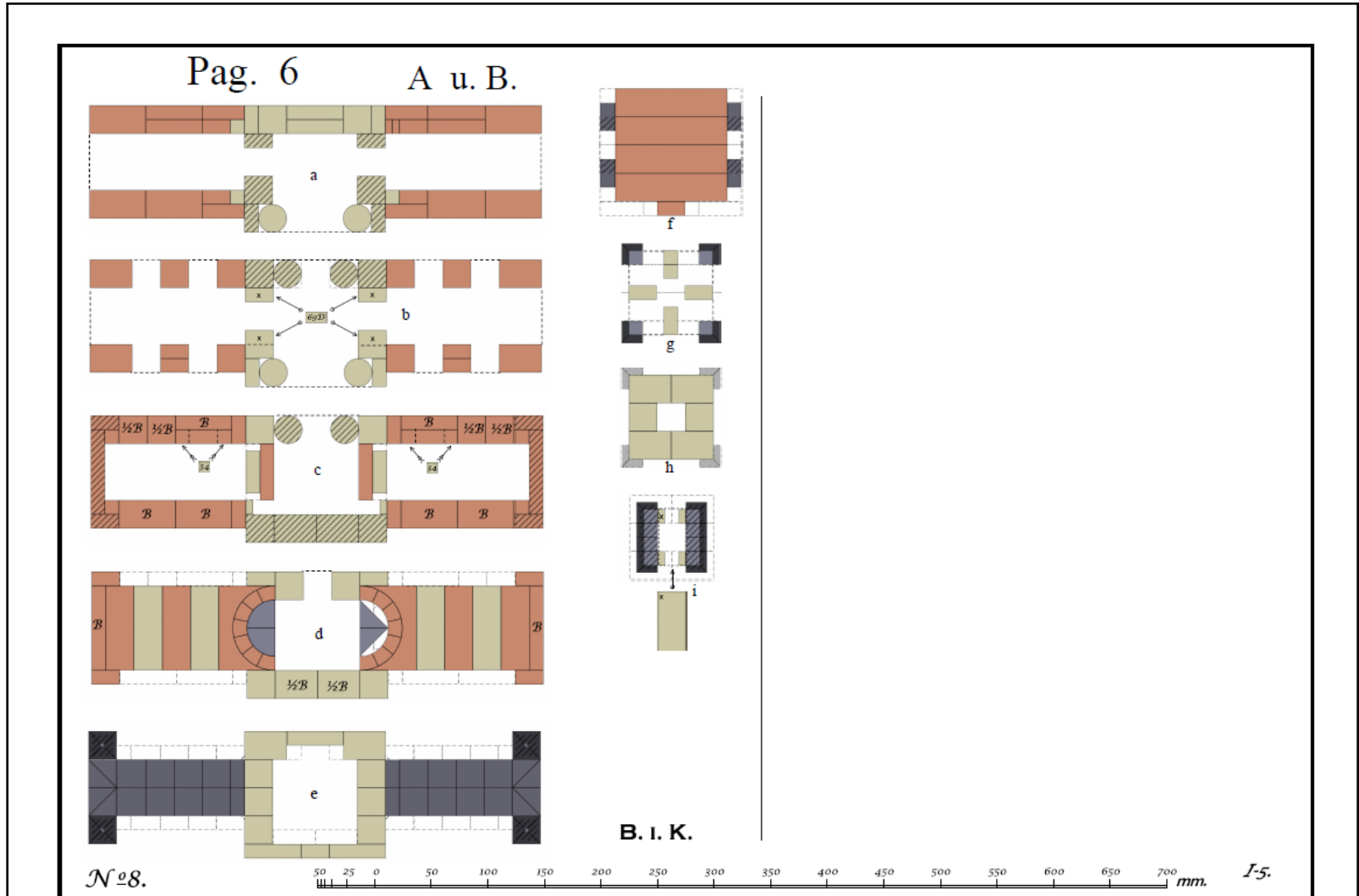
Copyright

I-7.

Gerhart Bruckmann;
B.i.K.

Cross sections

- ◆ Layers will NOT be indicated by letters (Richter) but by height numbers (Ankerplan)



Wytttenbach designs

- ◆ Visit at Ernst Born (Basel)
- ◆ It appears that **all original** Wytttenbach designs are still with him
- ◆ In total 67 designs are listed
 - But a few are double (old and new version)
 - Many are for much bigger stone sets than NF34
 - Some of the newer designs may not have a too interesting architecture
 - Buildings from the fifties
 - Still some 20 – 25 designs may be suited for NF34
- ◆ Designs have been very neatly drawn (by hand) and coloured on ~ A3 dimension
- ◆ I took photographs of all drawings of 4 designs
 - For most designs only scans of black and white photocopies exist

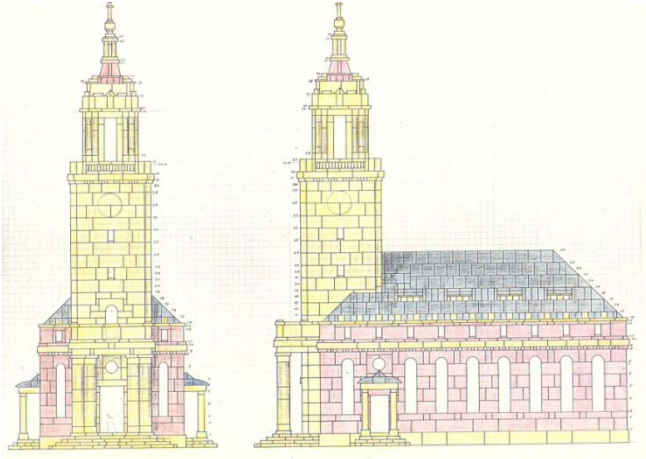


2 Fluternkirche
3 Munster von Bern
4 Gedenkhalle
7 Villa im Kirchenfeld

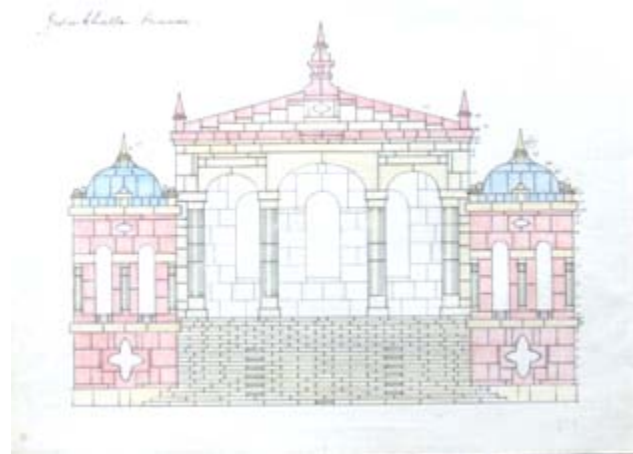
All photographs are well usable
(goes much faster than scanning)

Photographed Wyttenbach designs (all NF34)

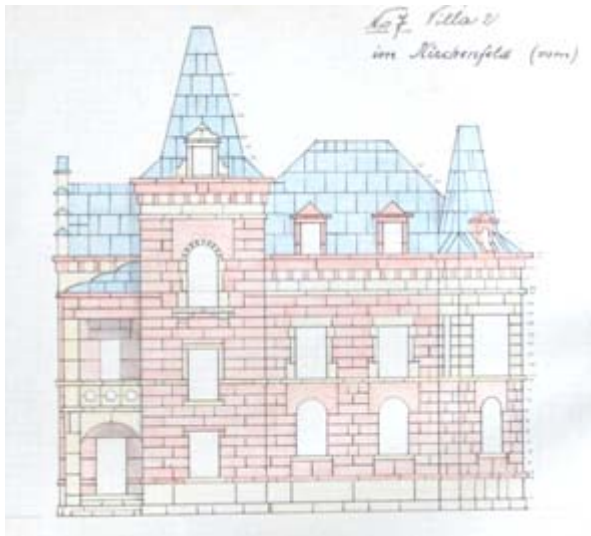
Fluternkirche in Zürich



Gedenkhalle



Villa (2) im Kirchenfeld



Munster von Bern



Munster von Bern (NF 34) in Ankerplan



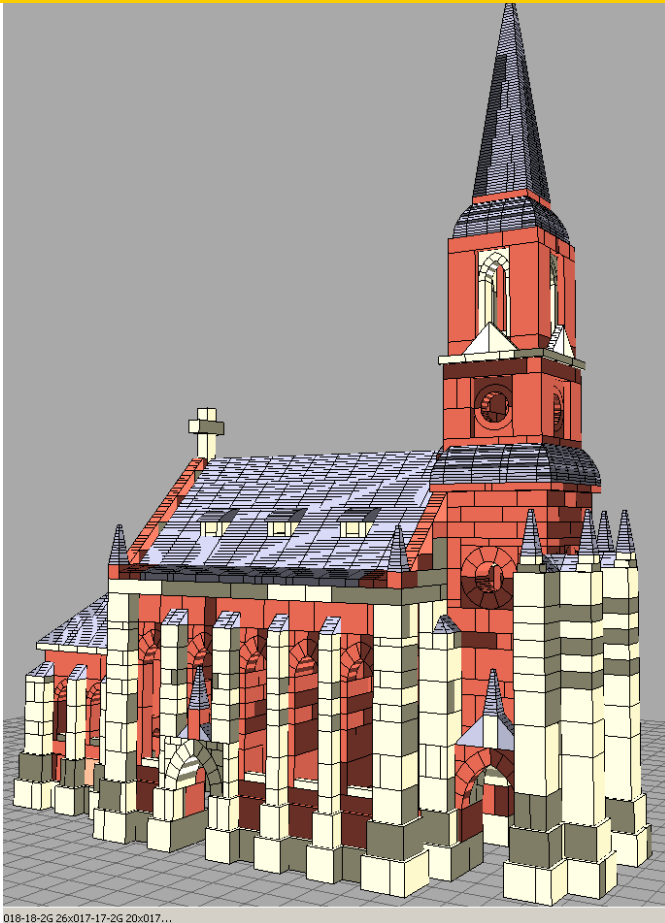
In review

From Burkhard a Fritsche design Kirche for NF30 in AnkerCAD

- ◆ Converting AnkerCAD designs into AnkerPlan

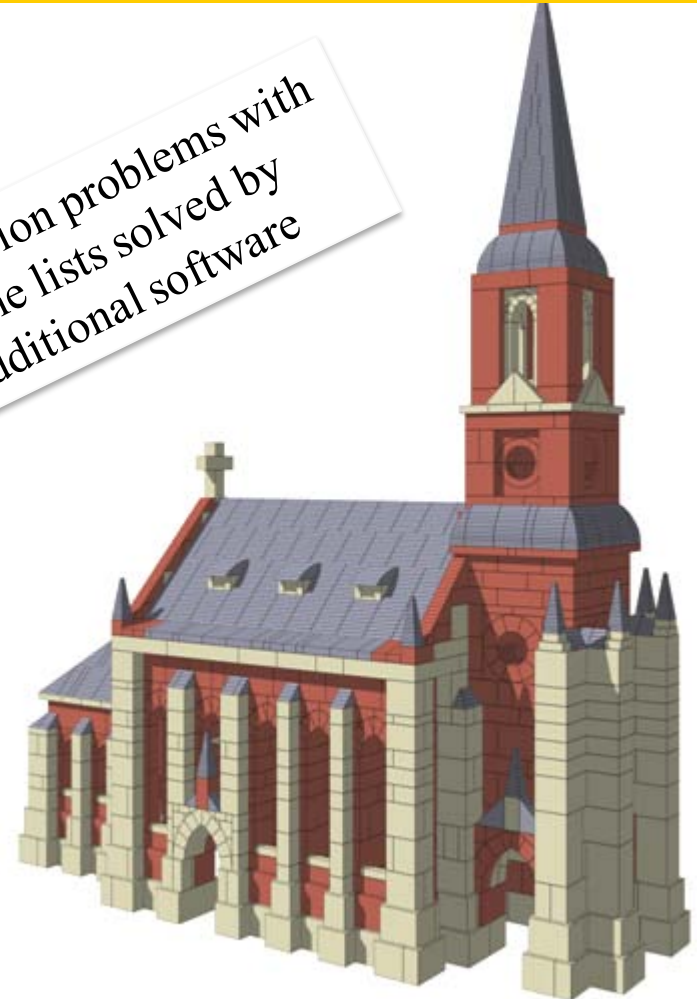
Strange shadows in AnkerPlan window

But OK when plotted using POV-Ray



018-18-2G 26x017-17-2G 20x017...

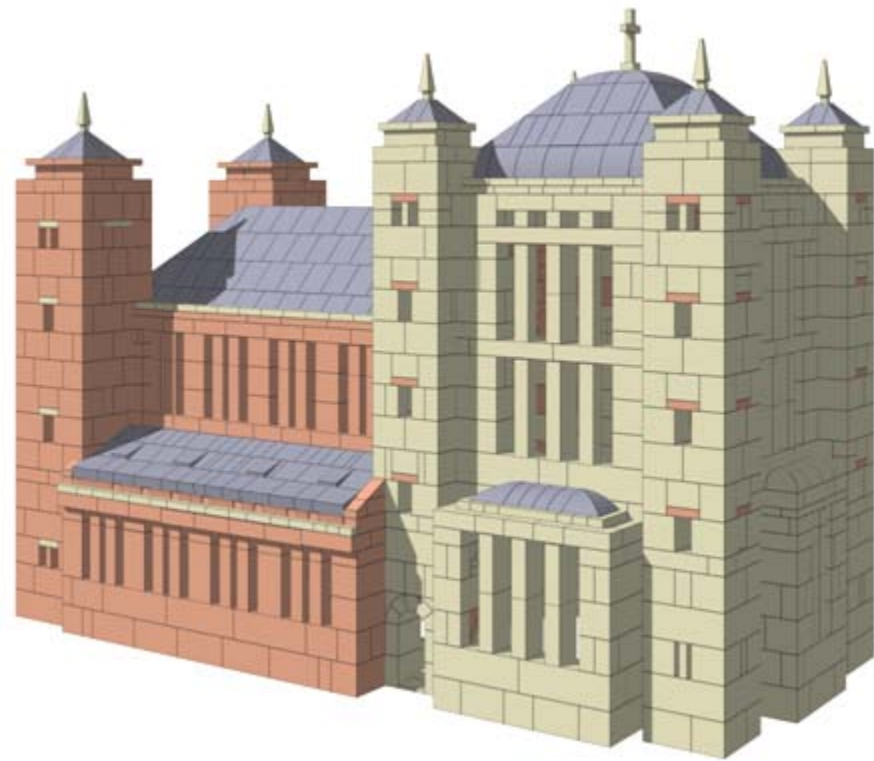
Conversion problems with
stone lists solved by
additional software



Recently received NEW designs

Gotische kerk (NF 26) (George Bielen)

*Abdijkerk van Itaporanga (NF34)
(George Bielen)*



Concluding

- ◆ Again **two new designs** (Bielen) contributed for NF34 and NF33 in 2 months
- ◆ **Long existing designs**
 - Bruckmann
 - Wyttenbach
 - Bolhuis
 -
- ◆ **Drafting problems** (conversions, formatting etc) more or less solved
- ◆ **Where to put** the future CVA NF booklets?
 - CVA website
 - Burkhard's site
 -
- ◆ **More info** about BiK on my home page
 - <http://www.nikhef.nl/~i56/Anker.html>

Who wants to make a new design for NF 24 to 34?
You always have priority over the old designs

